

Emory University School of Medicine
Alzheimer's Disease Research Center

Volume 1, Issue 3

Fall 2013

INSIDE THIS ISSUE:

<i>Atomoxetine</i>	2
<i>Brain Power</i>	2
<i>LBDA</i>	3
<i>AD State Plan</i>	4
<i>Community Forum</i>	4
<i>BRAIN</i>	5
<i>Clinical Trials</i>	6
<i>Donations</i>	7
<i>Classes</i>	8

Atomoxetine Trial – Where Are We Now?
 By Margaret Walker, PhD

Atomoxetine is a drug that could become a new treatment for individuals diagnosed with Mild Cognitive Impairment (MCI). This FDA-approved drug has historically been prescribed for treating symptoms associated with Attention Deficit Disorder (ADD). Researchers have made the exciting discovery that Atomoxetine also can improve working memory and attention in animal models. A good example of what we mean by working memory is the active “workspace” used in performing one’s daily activities. For a mouse, this might mean remembering which way to turn in a maze to reach a goal box filled with a food reward, whereas for humans, working memory enables us to remember where we parked our car in the supermarket parking lot, or what card our bridge partner led. At the Emory Alzheimer’s Disease Research Center (ADRC), we are attempting to determine whether Atomoxetine can improve working memory in individuals diagnosed with MCI.

In the summer of 2012, we began recruiting the first participants in a clinical trial to demonstrate the safety and efficacy of Atomoxetine for the treatment of MCI. Through the generous support of the Alzheimer’s Drug Discovery Foundation and an anonymous donor, we hope to enroll 40 participants in this trial. Unlike many clinical

trials where participants are randomly assigned to study groups with a chance of receiving placebo ranging anywhere from 20% to 50%, our study is designed so that *all* participants will receive active drug at some point during the 12 months of study. This study design allows us to assess the effectiveness of Atomoxetine on biological markers of the disease in the blood, brain, and cerebrospinal fluid. We are happy to report that we have enrolled 10 participants, and that our Subject #1 will complete the study in September, 2013. All participants, to date, have tolerated the study drug, and we’ve had no drug-related serious adverse events.

The Atomoxetine trial is being led by Dr. Allan Levey, chair of the Department of Neurology and Director of the Emory ADRC, and as many as 14 staff members of the ADRC are playing an active role in the study. The enthusiastic participation of our research staff bespeaks our optimism that this drug will effectively slow the progress of cognitive decline. We need participants for this research project. We are seeking people who have a diagnosis of MCI. All participants will be required to take the study drug daily, in addition to undergoing periodic tests to assess safety and to measure biological markers.

Published by the
 ADRC Education Core
 Graphic & Layout
 Designer: Tracey Burton

For more information about the Emory Alzheimer’s Disease Research Center or the content of this newsletter, please call Cornelya Dorbin 404-712-1416 or visit our website at www.med.emory.edu/adrc



@ADRCatEmory

Atomoxetine Trial – Where Are We Now?

Participants must be accompanied by a caregiver to study visits, and be willing to undergo blood draws, lumbar puncture (3X), MRI and PET scans.

The purpose of this research study is to determine whether Atomoxetine improves cognitive and behavioral functioning in individuals with MCI. We believe this is an important goal, because MCI can be the first stage in the more serious cognitive decline that accompanies Alzheimer's disease.

Our highly-skilled team works on the front line with patients and their loved ones to discover the latest

breakthroughs in the treatment of Alzheimer's disease. To join us in our goal to stop the progression of this life-altering disease, please call Margaret Walker at 404-728-6942 or email her at mlwalke@emory.edu.



Brain Power: How Exercise Improves Cognitive Performance

By Joe Nocera, PhD

People over the age of 65 frequently have difficulty with planning, initiating, sequencing, and monitoring complex cognitive behaviors. As such, the ability to carry out essential tasks of daily living is compromised. Interest-



ingly a growing body of research demonstrates that physical exercise can improve cognitive performance in older adults in an array of age-susceptible cognitive functions. Similarly, research demonstrates beneficial effects of computer based cognitive training in later life to promote brain health. However, research has not yet investigated combining physical and cognitive exercise. The objective of a study underway at the VA and Emory is to identify the combined/synergistic effects of cognitive training in conjunction with physical exercise on cognitive functions and mobility in sedentary older adults. To address this research question 60 older adults (age 65-89) will be randomized to two different types of exercise regimens. Each regimen will be followed by a popular commercially-available brain fit-

ness program that has demonstrated specific cognitive improvements and high adherence. While it is plausible that physical exercise can potentiate and increase generalizability of cognitive training while concurrently benefiting physical health, this intervention approach has not been adequately studied in sedentary older adults. Ultimately, this investigation could substantially advance the development of treatments for cognitive impairment because these goals explore an intervention that may potentially have pervasive effects on patient quality of life from a cognitive as well as a physical standpoint.

If you want further information about this study, please contact Joe Nocera at joenocera@emory.edu.

Save the Date
November 20, 2013
A Family Affair

The Piedmont Driving Club is the setting for the 4th annual *A Family Affair*. The dinner takes place on Wednesday, November 20, 2013. The annual fundraiser brings together the families touched by Alzheimer's, their friends, and the scientists of the Emory Alzheimer's Disease Research Center who

are battling the disease in their research labs. This year's "A Family Affair" will honor Emory neuroscientist David Weinschenker, PhD, whose research on the repurposing of the drug Strattera, commonly used in the treatment of ADHD, could offer concrete hope for slowing down the progression of Alzheimer's. The clinical trial is now in its second phase. Chairs for this year's event are Sarah and Jim Kennedy. For tickets to the Dinner, contact Natalie Disantis at 404-712-2084 or email Natalie.DiSantis@emory.edu.

Stand Strong with the Lewy Body Dementia Association

By Elizabeth Patrick, Marketing and Communications Manager
Lewy Body Dementia Association

What is Lewy body dementia (LBD)?

Lewy body dementia (LBD) is a common progressive brain disease that affects thinking, movement, behavior and sleep. Approximately 1.3 million Americans have LBD, but may not be correctly diagnosed because many doctors are unfamiliar with LBD. Most people see multiple doctors before receiving the final diagnosis of Lewy body dementia, and it can often take a year or two to get to the proper diagnosis. The Lewy Body Dementia Association (LBDA) is a 501(c)(3) nonprofit organization dedicated to raising awareness of the Lewy body

dementias (LBD), supporting patients, their families and caregivers, and promoting scientific advances. Through outreach, education and research, LBDA supports those affected by Lewy body dementias. LBDA helps to connect LBD caregivers to each other and to the most current information about LBD. Resources available to caregivers through LBDA include online discussion forums where caregivers meet and share their experiences, a national network of LBD support groups and the LBD Caregiver Link – 1-800-LEWYSOS – where caregivers can connect with

LBDA volunteers who have personal experience with LBD.

Please consider getting involved with LBDA through the volunteer program or support group network, making a donation or spreading the word about LBD during October LBD Awareness Month, “A Month to Remember,” which started recruitment in May! To learn more about LBD and LBDA please visit www.lbda.org or call Elizabeth at 404-935-6444.



New Frontiers in Young Onset Alzheimer's Disease

By Thomas Wingo, MD

Alzheimer's disease (AD) is always devastating when it strikes, but when it occurs in people less than 60 years-old the devastation is brought into even sharper focus. This is because of the loss of work productivity and tremendous emotional and financial strain placed on other working family members and young children. Fortunately, young-onset AD represents about 1% of all people with the disease. Nevertheless, studying these individuals leads to vital discoveries about how AD occurs. We think there is much more to be learned by studying this often neglected group of AD patients.

Efforts to find the genetic basis of AD began in the 1980's and focused on families that transmitted young-onset AD from one generation to the next. Even among those who are diagnosed with young-onset AD, these families are rare and represent about 10% of all young-onset AD. Subsequently, genetic studies

with these families led to the discovery of AD-causing mutations in three genes:

- 1) amyloid precursor protein
- 2) presenilin 1
- 3) presenilin 2.

It is hard to overstate the importance of finding these mutations in AD research. These mutations have lent vital support to one view of how AD occurs, the amyloid hypothesis, and these mutations are the basis of nearly every model system of AD.

Considering the importance of young-onset Alzheimer's disease, we were surprised that no one had seriously explored the genetic basis of the 90% of individuals young-onset AD without a family history of young-onset AD. Using national U.S. data, we found that those individuals likely inherit the disease in a recessive manner. In other words, they inherit two mutations that when combined cause AD. Considering how revolutionary the initial discoveries of mutations in

amyloid precursor protein, presenilin 1, and presenilin 2 were to AD research, a new recessive genetic cause would likely have a similar impact.

This is a new hypothesis, and one we are vigorously pursuing to identify new genetic causes of the disease.

To address the specific needs in Young Onset AD, a task force was formed to guide the implementation of programs and services for patients with early onset AD. This advisory group meets monthly to gather information, accelerate the research efforts and impact patients in a more profound way. If you are interested in learning more about our efforts call Natalie Disantis at 404-712-2084.

**Volunteers needed
for YOAD Taskforce
Call 404-712-2084**

Georgia Alzheimer's and Related Dementias State Plan Task Force

Thanks to the combined efforts of advocates such as the Alzheimer's Association of Georgia, the Georgia Council on Aging, and the Coalition of Advocates for Georgia's Elderly Georgia is moving toward the creation of a State Plan for Alzheimer's Disease. Their testimony and that of numerous others who spoke of the personal costs of dementia were instrumental in garnering legislative support. Additionally, Drs. Levey and Lah of the Emory ADRC testified at the House and Senate hearings by providing legislators with in-depth information on Alzheimer's disease, current research trends, and needs for the future.



Senator Underman pictured with Task Force Members

As a result, the General Assembly passed and Governor Deal signed Senate Bill 14, sponsored by Senator Renee Underman of Buford. It creates the Georgia Alzheimer's and Related Dementias Task Force, chaired by Director of Division of Aging Services Dr. James Bulot, who will be joined by Underman, Representatives Tommie Benton and Sharon Cooper, and Commissioners from the Departments of Public Health and Community Health. They will meet with advisors from a variety of fields to address the incidence of dementia, costs, research, existing infrastructure, and caregiver support services. Their mission is to recommend a State Plan which can allow Georgia to set priorities, budget incrementally, and coordinate efforts among state and federal agencies as well as the private sector, non-profit, and faith-based community to combat diseases which afflict a reported 120,000 Georgians.

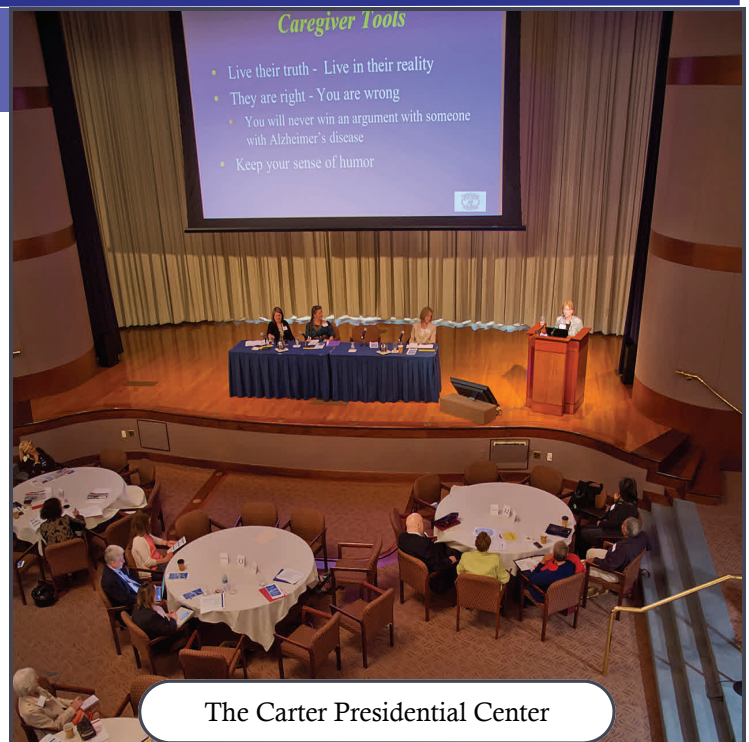
In 2012 the federal government released the first National Alzheimer's Disease Plan, to coordinate national efforts, public and private, to address the health crisis. Twenty-four states have such plans in place while another six have appointed task forces or commissions. The Georgia Task Force will be holding public hearings on September 26, October 24, November 21, and December 19 at locations to be announced. For further information, please call 404-463-1368.

Community Forum Helps Caregivers By Monica Parker, MD

The Emory Alzheimer's Disease Research Center and the Registry for Remembrance presented the fifth community forum: *Navigating the Complex Role of the Caregiver* at the Carter Presidential Center on April 30th. The forum drew nearly 300 participants and offered opportunities to learn the latest research and information for caregivers of Alzheimer's patients. Attendees heard from the top researchers, social workers and clinicians on how to provide the best care for people with Alzheimer's disease and related dementias.

The format included lectures, expert panel discussions and interactive question and answer sessions. Presenters provided updates on proper management of the disease and practical tips to help individuals ease the burden of caregiving. The following is a quote from an attendee: "The content was engaging and met my specific needs by sharing real-world solutions that make living with Alzheimer's disease less challenging."

Sponsors for the forum included the Emory Center for Health in Aging, Fulton Dekalb Hospital Authority, Gentiva, Alzheimer's Association, The Links Incorporated—Atlanta Chapter and Caravita Home Care. The next forum is scheduled for October 29, 2013. There is no charge for this event however space is limited. Registration is required and can be accessed by visiting <http://6thforum.eventbrite.com>. For more information contact Cornelya Dorbin at 404-712-1416.



The Carter Presidential Center

Registry for Remembrance—a unique community and academic partnership that strives to educate African Americans on early screening and detection of dementia by promoting timely and effective use of cognitive health services.

Inaugural *Hope on the Horizon* Luncheon

By Natalie Disantis, JD

On May 16, 2013 the Alzheimer's Society of Atlanta and the Alzheimer's Drug Discovery Foundation launched the first annual *Hope on the Horizon*, a symposium and luncheon to raise funds for and awareness of Alzheimer's disease research and treatment. The event, co-hosted by Leonard A. Lauder, Alzheimer's Drug Discovery Foundation chairman, chairman emeritus of the Estée Lauder Companies, and Mary Rose Taylor, founding member of the Alzheimer's Society of Atlanta highlighted the tremendous progress that's being made to find treatments to detect, prevent, and cure Alzheimer's and related dementias. The event raised over \$200,000 with 100% of the funds going to support groundbreaking Alzheimer's drug research at the Emory Alzheimer's Disease Research Center (ADRC). During the luncheon, nationally ac-

claimed interior designer Dan Carithers received the inaugural Horizon Award for Innovation and Design. Dan's public acknowledgment of his diagnosis of Alzheimer's disease has opened the hearts and

minds of those more reticent about discussing the disease. The ADRC is grateful to both the Alzheimer's Society of Atlanta and the Alzheimer's Drug Discovery Foundation for launching this very important event.



From left, event co-chair Mary Rose Taylor, Honoree Dan Carithers with his wife Nancy Carithers, Nancy Corzine, chair of the Alzheimer's Drug Discovery Foundation, and Leonard Lauder, founder of the ADDF.

Brain Research through Advancing Innovative Neurotechnologies (BRAIN) Initiative

By Ken Hepburn, PhD

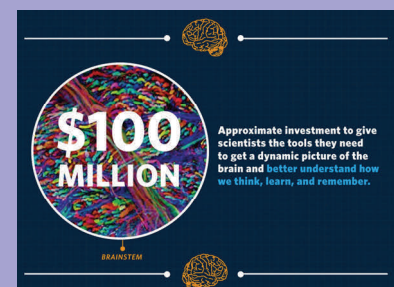
In April, President Obama announced the BRAIN initiative; Brain Research through Advancing Innovative Neurotechnologies. This is a fifteen-year, \$100 Billion dollar project aimed at developing the technical capacity to observe the activity of individual neurons and the interaction between neurons in the brain. This year, the initiative will be launched with a \$100 Million dollar investment to plan the overall strategy for the initiative. This is an exciting venture. Its scope dwarfs that of the Human Genome Project that has already begun to yield benefits in the area of personalized medicine. The mission - to understand how the brain works at its most fundamental levels -- is breathtaking. And it provides hope for all of us engaged in seeking the

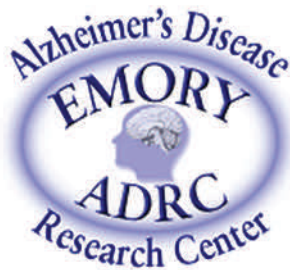
cure for Alzheimer's.

It is important to bring perspective to bear on the initiative. First of all, it is encouraging to see this kind of federal investment in brain science. But answers will not come quickly. The BRAIN Initiative will -- eventually -- benefit all who suffer from disorders associated with the brain and the central nervous system. The initiative will benefit those with traumatic brain injuries (like wounded warriors returning from distant conflicts), or persons with Parkinson's or Downs syndrome -- or persons with Alzheimer's disease. Those kinds of results may still be years away. In the meantime, the BRAIN initiative will support the development of new and very sensitive ways to examine how the brain works. Some of these innova-

tions may have immediate payoff for identifying new targets for therapies or providing new and more precise methods to measure the effects of therapies.

An important measure of our national commitment to developing the map of brain activity that is the goal of the BRAIN project will be sustained support that does not draw down resources from ongoing research aimed at understanding and curing Alzheimer's.





Clinical Trials & Research Studies Summer/Fall 2013

Emory Alzheimer's Disease Research Center

Wesley Woods Health Center, 1841 Clifton Rd., Atlanta, GA 30329

Grady Neurology Clinic, 80 Jesse Hill Jr. Drive SE, Atlanta, GA 30303

404-728-6950 <http://med.emory.edu/ADRC/>

RESEARCH STUDY	ELIGIBILITY	CONTACT PERSON
Atomoxetine Clinical Trial: for people with Mild Cognitive Impairment (MCI)	<ul style="list-style-type: none"> • Diagnosis of Mild Cognitive Impairment • Stable on Medications for 3 months • Study partner who can attend all visits 	Lavezza Zanders 404-728-6392 lzander@emory.edu Raven Lee 404-728-4780 rclee2@emory.edu
BAN2401: A 18 month infusion study to slow Alzheimer's disease (AD) progression	<ul style="list-style-type: none"> • Diagnosis of MCI due to AD or mild AD • 50-90 yrs old • Study partner available for all visits • Willing to undergo MRI & PET scans 	Gail Schwartz 404-728-6395 gschwar@emory.edu
Honor Research Registry: Longitudinal study of changes in memory and other cognitive skills	<ul style="list-style-type: none"> • Aging people with no memory problems • People of any age with MCI, Alzheimer's disease or other forms of dementia • Willing to participate in additional research studies • Study partner available to participate in visits 	Letheshia Husbands 404-728-6950 lhusban@emory.edu
EPOCH: A clinical trial testing a new treatment for Alzheimer's disease (AD)	<ul style="list-style-type: none"> • Diagnosis of mild to moderate AD • 55-85 year old • Study partner available for all visits • Willing to have dilated eye exams and MRIs 	Phyllis Vaughn 404-728-6567 pvaughn@emory.edu
Alzheimer's Disease Neuroimaging Initiative – 2 (ADNI-2)	<ul style="list-style-type: none"> • Age 55 – 90 with no memory problems or MCI or mild Alzheimer's • Study partner available for all study visits • Willing to have imaging & lumbar puncture 	Lavezza Zanders 404-728-6392 lzander@emory.edu
Caregiver Study (COOL-AD)	<ul style="list-style-type: none"> • For people of African American heritage • For Caregivers of a loved one with Alzheimer's • Willing to participate in a group 	Maryam Robinson Mrobi3@emory.edu 404-727-8481
Cognitive Rehabilitation of Memory in Mild Cognitive Impairment (MCI) Examines changes in learning, memory, and brain activity	<ul style="list-style-type: none"> • Diagnosis of MCI • Willing to undergo functional MRI • 	Casey Bowden 404-712-4321 cbowden@emory.edu Justin Hartley 404-712-0936 Jhart13@emory.edu
Registry for Remembrance: An initiative to increase awareness & participation in neurology research	<ul style="list-style-type: none"> • Ethnic individuals of African Ancestry • Aging people over 60 with no memory problems • People of any age with mild cognitive impairment, Alzheimer's disease or other forms of dementia • Study partner available to for all visits 	Letheshia Husbands 404-728-6950 lhusban@emory.edu

Donations to the Emory University Alzheimer's Disease Research Center ~ January 1, 2013 — May 1, 2013

To make a gift contact *Katie Dozier*, Associate Director of Development at 404.712.2211 or katie.dozier@emory.edu

Donors

Joanne & Charles S. Ackerman
 Dolly and John Hurst Adams
 Madeline & Howell Adams, Jr.
 Alzheimer's Association – Georgia
 Janet Moore & Bobby Joe Anderson
 Nancy L. Argo
 Joann & Micajah Bagwell
 Virginia and Tom Barrow Fund
 Lola & Charles H. Battle, Jr.
 Cecile and Alister Bazaz
 Carl Benson
 Lynn & Brian L. Boak
 Anne & John Brent
 Karen Campbell
 The Rev. Kelly Campbell
 Cards for Causes, LLC
 Nancy & Dan Carithers
 Elizabeth & Charles W. Cary, Jr.
 Pamela & Samuel Chawkin
 Aimee & Thomas C. Chubb III
 The Coca-Cola Company
 Julia & James Combs
 Darlene & Albert H. Conrad, Jr.
 Cousins Foundation, Inc
 Mary & Tim Coveney
 Bruce A. Crosson
 Claire H. Crumbley Trust
 Betty Jo & Overton Currie, Jr.
 Lavona Currie
 Leila E. Dasher
 Natalie Disantis
 Cornelya and David Dorbin
 Vivian & Samuel DuBose
 Suzanne & John Earley
 Eleanor & William Effinger
 Eli Lilly and Company Foundation, Inc
 Terry & Charles Martin Epstein
 Jo D. Faddis
 Steven Fenton
 Linda & Richard Foa
 Fraternal Order of Eagles
 Ashanthi Gajaweera
 Catherine & Donald Gearin
 GE Foundation
 Georgia-Pacific Shared Services Corp.
 Ann P. Grant
 David B. Grass
 Bernard & Anne Howell Gray Fund
 June & Herbert O. Hamby
 Sonal R. Hazariwala
 Sarah & Sydney Heindel
 Katherine & John G. Heller

Terrie-Anne Alexandra Heron
 Douglas J. Hertz Family Foundation
 The Hicks Charitable Foundation
 Ann & David M. Hicks
 Victoria J. Hoffman
 Irene & Mark Hofstetter
 Carol & Noel Holtz
 Yazan Houssami
 John Raymond Jones, Jr.
 Gloria Smith Kinsey
 Carolyn & Floyd J. Lammerseld
 Margaret S. Lathem
 Sandra & Bruce Lawson
 Little, Greenlee & Associates LLC
 Rosemary McCausland Magee
 Walter Brem Mayer, Jr.
 Mary Sydney McAllister
 Sandy S. McGaffigan
 Audrey B. Morgan
 Betty & Jean A. Mori
 Dadiba N. Motiwalla
 Marcia & Anthony Nicholls
 The Gerald L. & Jacqueline W. Nichols
 Samuel Roberts Noble
 Nancy & Michael A. Norman
 Northwest Georgia & Lookout Valley
 Carolyn Halpern Oppenheimer
 Diana & David Penson
 Martha & John H. Plant
 Margaret & Nathan Porter
 Frank & Denise Quattrone Foundation
 The Rich Foundation, Inc
 Catherine & David Rye
 Salem Hills Vineyard & Winery
 Harriet & Charles M. Shaffer, Jr.
 Schottenstein Pain & Neuro
 Nollie & Waymon Shrouder
 Lori A. Shutter
 Andrea & Eric B. Sklar
 Karen & Martin Silver
 Christopher Simon
 Michael R. Sorrell
 Alex & Betty Smith
 Gail & Henry McCord Smith, Jr.
 Laura & Carter Smith
 Latanya King Singleton
 Adam G. Sitz

Paige Martin-Srinivasan
 Susan & Michael Starr
 Harry P. Stephens
 Richard W. Stephens
 Anne & Tim Taylor
 Denise & Kenneth Troiano
 Dr. Ronald J. Tusa
 Georgia & Joey Vickers
 Joseph & Felicia Weber Family Foundation
 William Weiller
 Vi G. Weinstein
 Wesley Woods Senior Living, Inc.
 Melinda Douglas Weston
 Weswood Foundation
 Joan & D.L. White
 Thelma Elaine Williams
 Mary & Charlie Yates Family Fund
 Yellowlees Family Fund

THANK YOU!

As a 501(c)(3) not-for-profit organization, the Emory Alzheimer's Disease Research Center serves patients, families and communities throughout the Southeast region with the generous support of your individual and corporate donations.



**Alzheimer's Disease
Research Center**

Contributions to support the Emory Alzheimer's Disease Research Center

Enclosed is my tax deductible gift of \$_____. Please note that this contribution is:

In Memory of: In Honor of: _____

Please send acknowledgement of this donation to:

Name: _____

Address: _____

City: _____ State: _____ Zip: _____

Donor Name: _____

Address: _____

City: _____ State: _____ Zip: _____

Please make checks payable to:

Emory Alzheimer's Disease Research Center

c/o Emory Univ. Health Sciences Development

1440 Clifton Road, Suite 112

Atlanta, Georgia 30322

CONTACT US

Emory Alzheimer's Disease Research Center

Wesley Woods Outpatient Clinic
 1821 Clifton Road, NE
 Atlanta, GA 30329
 404-728-6950
<http://med.emory.edu/ADRC>

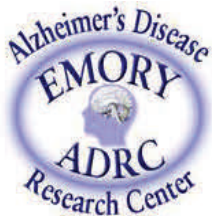
Memory Assessment Clinics

Wesley Woods Outpatient Clinic
 1821 Clifton Road, NE
 Atlanta, GA 30329
 404-728-4936

Grady Memorial Hospital
 80 Butler Street, SE
 Atlanta, GA 30335
 404-616-4567

To register for a class call Susan Peterson-Hazan at 404-728-6273.

Class	Dates	Location
Early Memory Loss Group * <i>(Co-sponsored by the Alzheimer's Association, Georgia Chapter)</i>	An 8 Week class that meets: Fridays: 11:00 – 12:30 September 6 th – October 25 th	Wesley Woods Health Center 1841 Clifton Rd, NE, Atlanta, GA 30329
Savvy Caregiver Class *** <i>(Sponsored in part by a grant from the Wesley Woods Foundation)</i>	A six week class that meets: Fridays: 10:30-12:30 November 1, 8, 15, 22 and December 6 & 13	* 3 rd Floor Conference Room
Late Stage Alzheimer's Disease <i>(Sponsored in part by a grant from the Wesley Woods Foundation)</i>	A 3 Week class that meets: Fridays: 11:00 – 12:30 January 10 – January 24	** 4 th Floor Conference Room
Caregiver Support Group **	Meets every other Friday 10:30-12:00	*** 5 th Floor Conference Room
Frontotemporal Dementia Caregiver Support Group 2 nd Tuesday of every month 6:30-8:00 pm	Wesley Woods Geriatric Hospital AV Conference Room, 1821 Clifton Rd., Atlanta, GA 30329	



Emory Alzheimer's Disease Research Center
 Wesley Woods Outpatient Clinic
 1821 Clifton Road, NE
 Atlanta, GA 30329

NATIONAL INSTITUTE ON AGING
National Institutes of Health